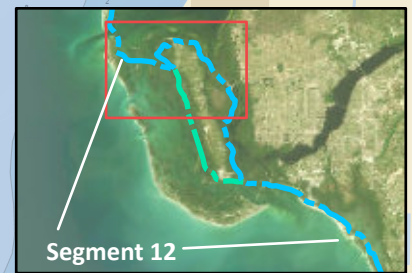


Emergency Contact Info:

911
Lee County Sheriff: (239) 477-1000
FWC 24-hour wildlife emergency/BUI hotline:
1-888-404-3922

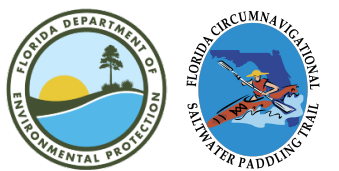
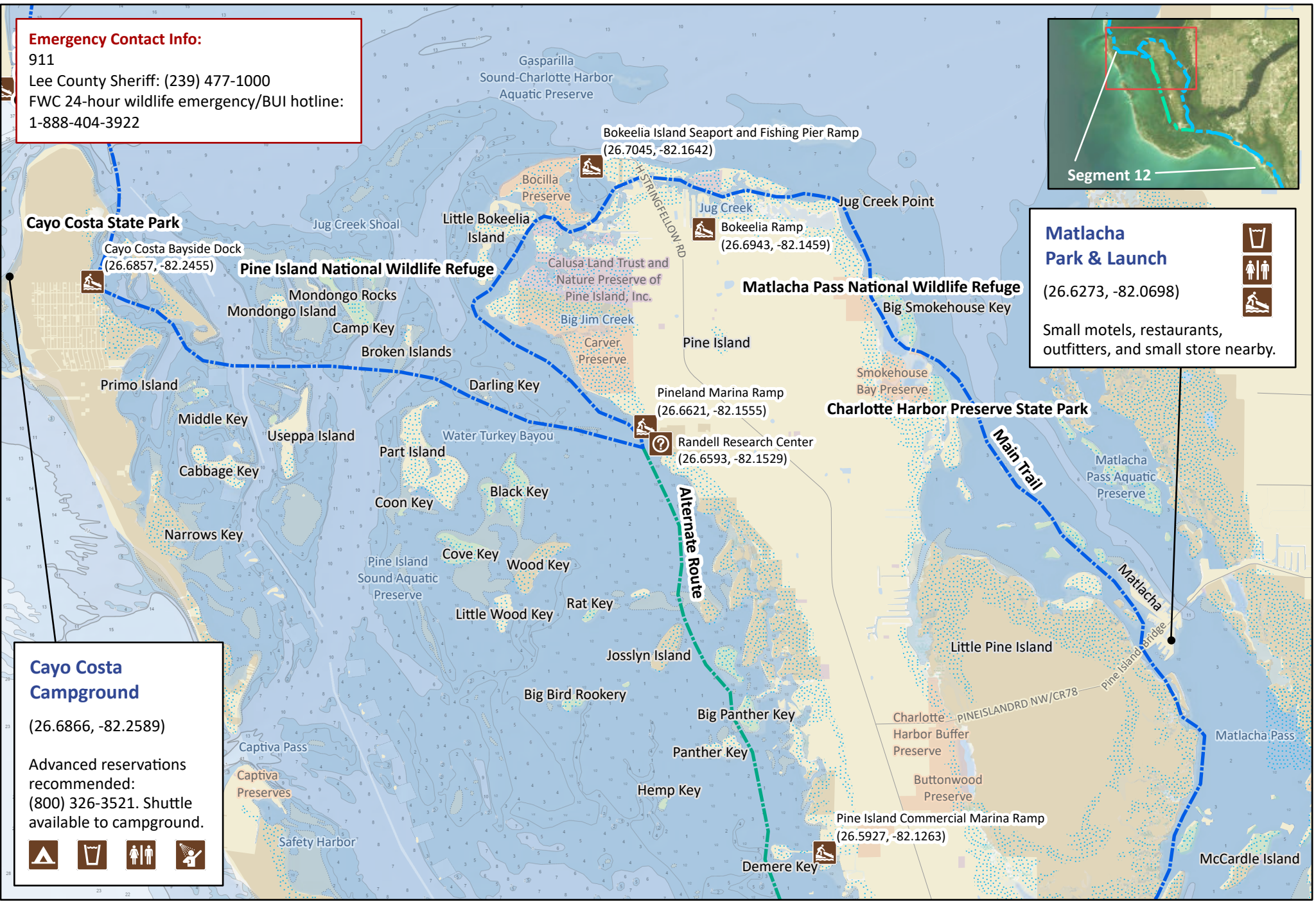


Matlacha Park & Launch
(26.6273, -82.0698)

Small motels, restaurants, outfitters, and small store nearby.

Cayo Costa Campground
(26.6866, -82.2589)

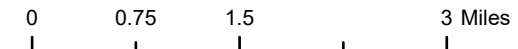
Advanced reservations recommended:
(800) 326-3521. Shuttle available to campground.



Florida Circumnavigational Saltwater Paddling Trail

Segment 12: Pine Island/Estero Bay (Map 1 of 3)

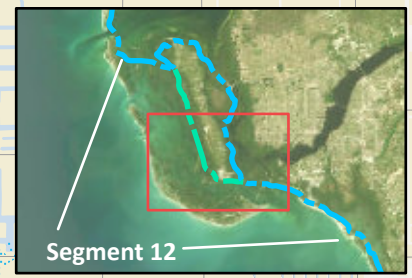
Begin: Cayo Costa State Park Distance: 38.3-41.5 miles
End: Lovers Key/Bowtie Island Duration: 2-3 days



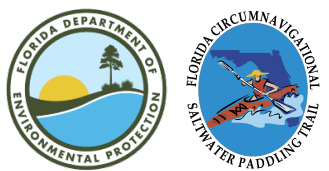
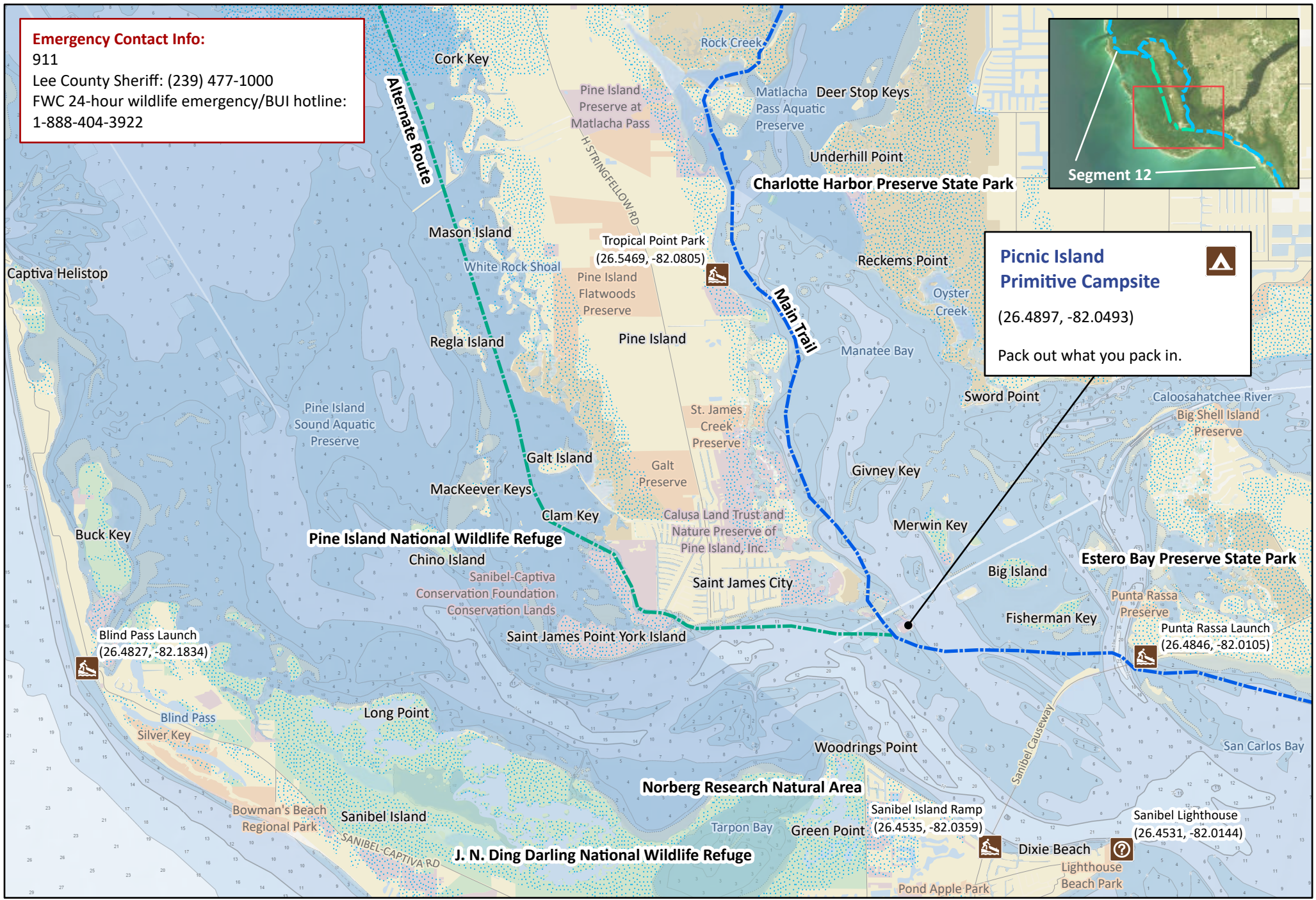
Disclaimer: This guide is intended as an aid to navigation only. A Global Positioning System (GPS) unit is required and persons are encouraged to supplement these maps with NOAA charts or other maps.
Updated: 10/12/2023

Emergency Contact Info:

911
Lee County Sheriff: (239) 477-1000
FWC 24-hour wildlife emergency/BUI hotline:
1-888-404-3922



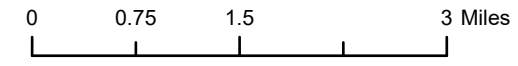
**Picnic Island
Primitive Campsite**
(26.4897, -82.0493)
Pack out what you pack in.



Florida Circumnavigational Saltwater Paddling Trail

Segment 12: Pine Island/Estero Bay (Map 2 of 3)

Begin: Cayo Costa State Park
End: Lovers Key/Bowtie Island
Distance: 38.3-41.5 miles
Duration: 2-3 days



Disclaimer: This guide is intended as an aid to navigation only. A Global Positioning System (GPS) unit is required and persons are encouraged to supplement these maps with NOAA charts or other maps.
Updated: 10/12/2023



Emergency Contact Info:

911

Lee County Sheriff: (239) 477-1000

FWC 24-hour wildlife emergency/BUI hotline:

1-888-404-3922

Matlacha Pass National Wildlife Refuge

San Carlos Bay - Bunche Beach Preserve

Bunche Beach
(26.4759, -81.9674)

Estero Bay Preserve State Park

Bowditch Point Park

Salty Sam's Ramp
(26.4571, -81.9428)

Matanzas Preserve Access
(26.4513, -81.9365)

Fort Myers Beach

Mound House Park Launch
(26.4468, -81.9276)

Bowditch Point Regional Park

(26.4631, -81.9662)

Snack bar available.



Lovers Key Wayside Picnic Area

(26.4009, -81.8704)



Lovers Key Beach

(26.3899, -81.8796)

Small store and kayak rental near boat launch.



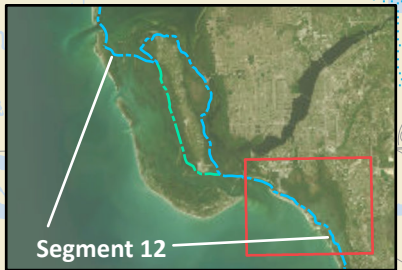
Bowtie Island Campsite

(26.3766, -81.8536)

Paddlers allowed to camp with float plan and free permit.
Calusa Blueway Coordinator:
(239) 707-7981



Segment 12



Florida Circumnavigational Saltwater Paddling Trail

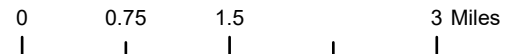
Segment 12: Pine Island/Estero Bay (Map 3 of 3)

Begin: Cayo Costa State Park

End: Lovers Key/Bowtie Island

Distance: 38.3-41.5 miles

Duration: 2-3 days



Disclaimer: This guide is intended as an aid to navigation only. A Global Positioning System (GPS) unit is required and persons are encouraged to supplement these maps with NOAA charts or other maps.
Updated: 12/2022

